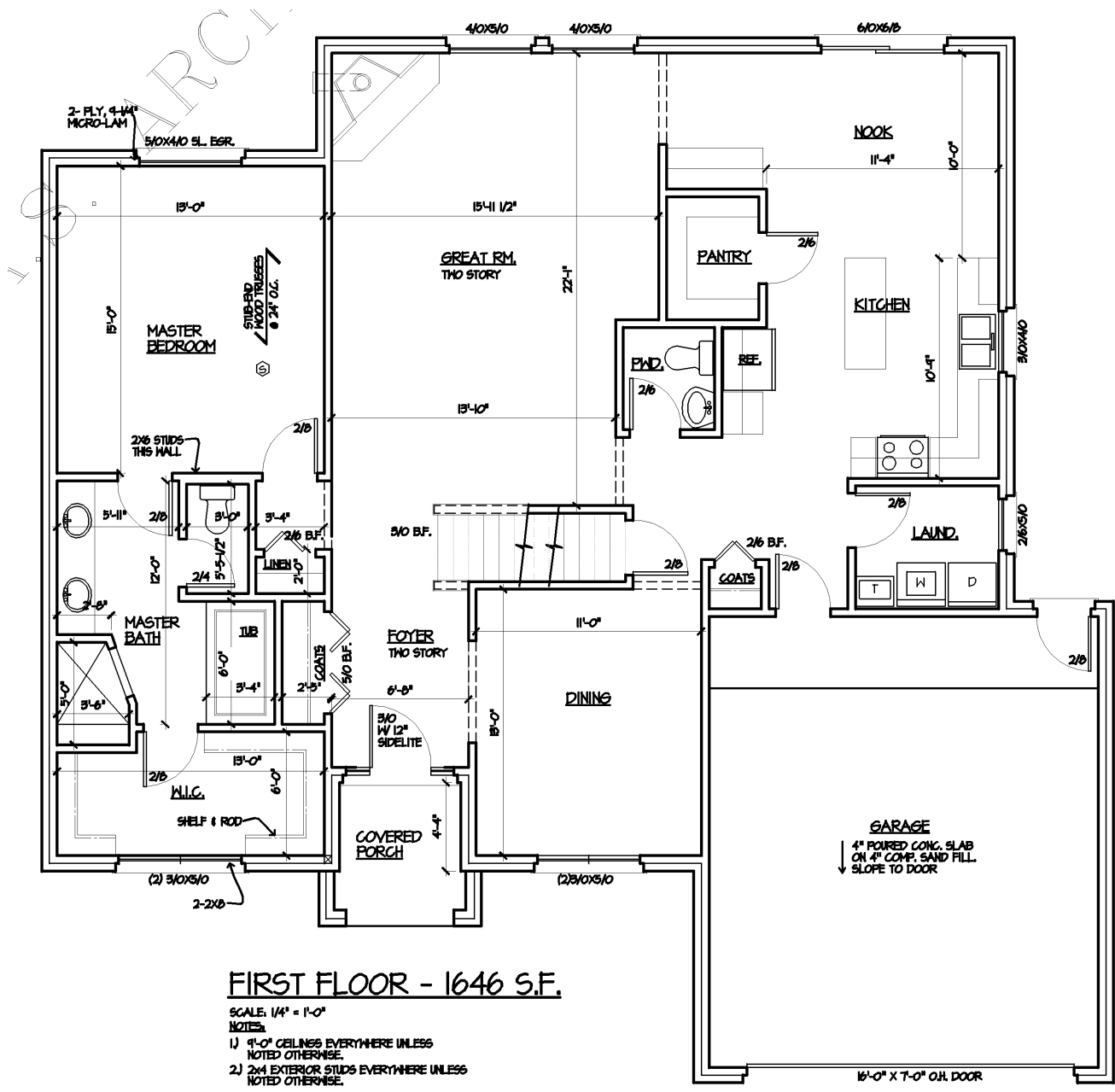




**FRONT ELEVATION**

SCALE: 1/4" = 1'-0"



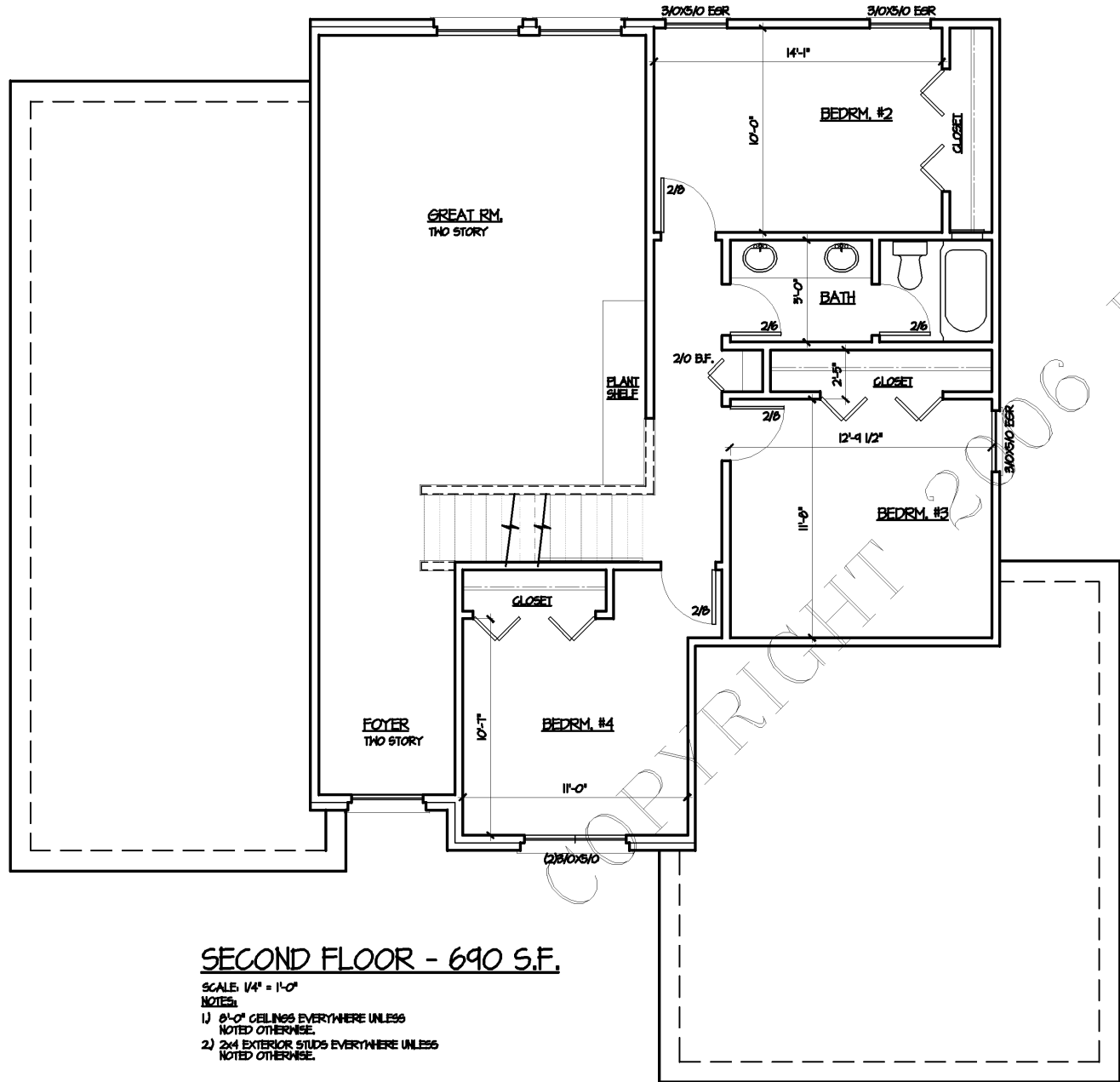
### FIRST FLOOR - 1646 S.F.

SCALE: 1/4" = 1'-0"

**NOTES:**

- 1) 9'-0" CEILING EVERYWHERE UNLESS NOTED OTHERWISE.
- 2) 2x4 EXTERIOR STUDS EVERYWHERE UNLESS NOTED OTHERWISE.

16'-0" X 7'-0" O.H. DOOR



**SECOND FLOOR - 690 S.F.**

SCALE: 1/4" = 1'-0"

NOTES:

- 1) 8'-0" CEILINGS EVERYWHERE UNLESS NOTED OTHERWISE.
- 2) 2x4 EXTERIOR STUDS EVERYWHERE UNLESS NOTED OTHERWISE.